

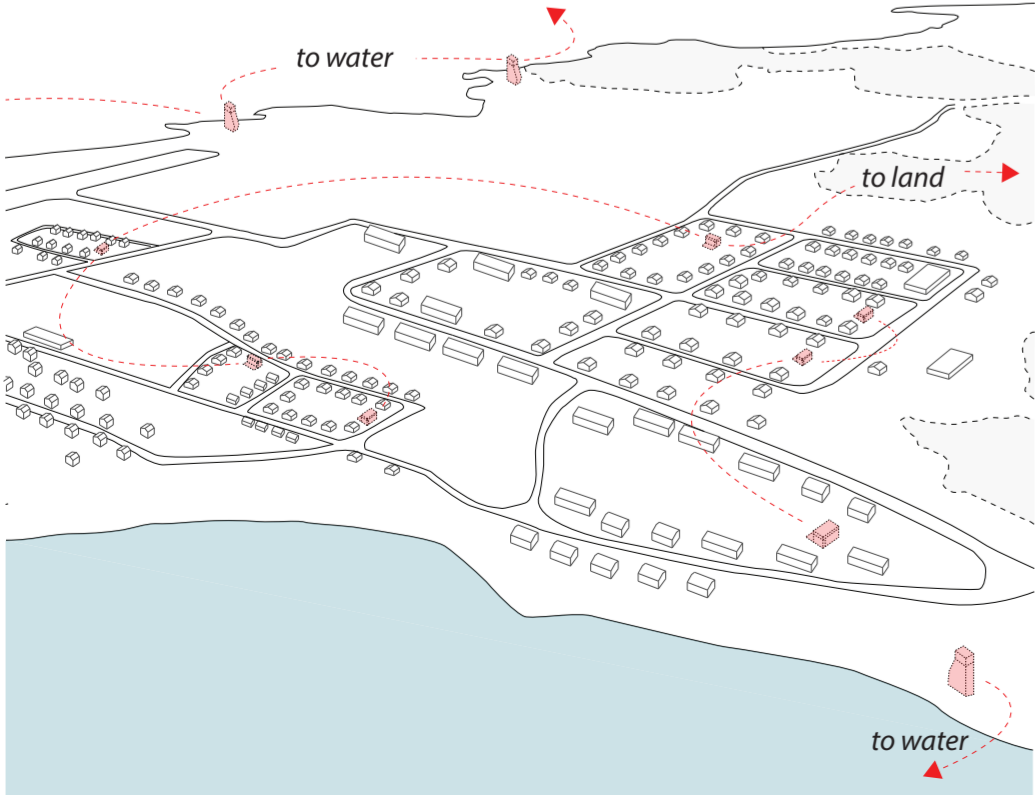
# OUT ON THE WATER OUT ON THE LAND



CCA Charrette 2016 | Reassembling the North

The physical built form of northern communities is but a small part of the larger idea of home for Inuit of the North. The extended landscape, in which residents hunt, fish, and harvest continue to be a fundamental part of the contemporary life in Nunavik. As villages continue to grow, efforts continue to focus on issues related to the built forms and community infrastructures. These efforts continue to reinforce sedentary ideals, and fail to embrace the strong cultures of life on the land. *Out on the Water, Out on the Land* works to strengthen / expand the relationship that Inuit of Nunavik have between the built form of the village and this extended landscape. The means of accessing the land and the water is the point of intervention. Two self built structures address the practical needs of storing canoes and sleds in the community while also working to expand ones awareness of the landscape in two ways.

a) The approach to storage displays individual sleds (qammutiqs) or kayaks to the community. This creates a register which notifies residents who is out on the land and when. b) Each structure provides an elevated viewing platform from which residences can obtain focused visual perspectives. In providing these spaces at the beginning and end points of the journey on the land and water, a distinct place emerges in the village, one that is fundamentally intertwined with meaning of the extended landscape.



1 | wood



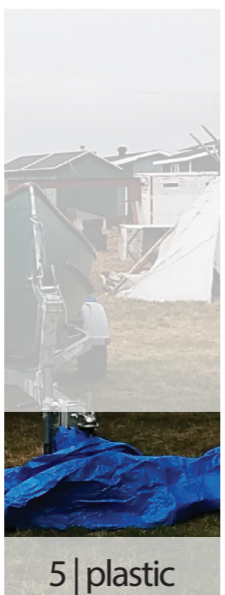
2 | barrel



3 | steel

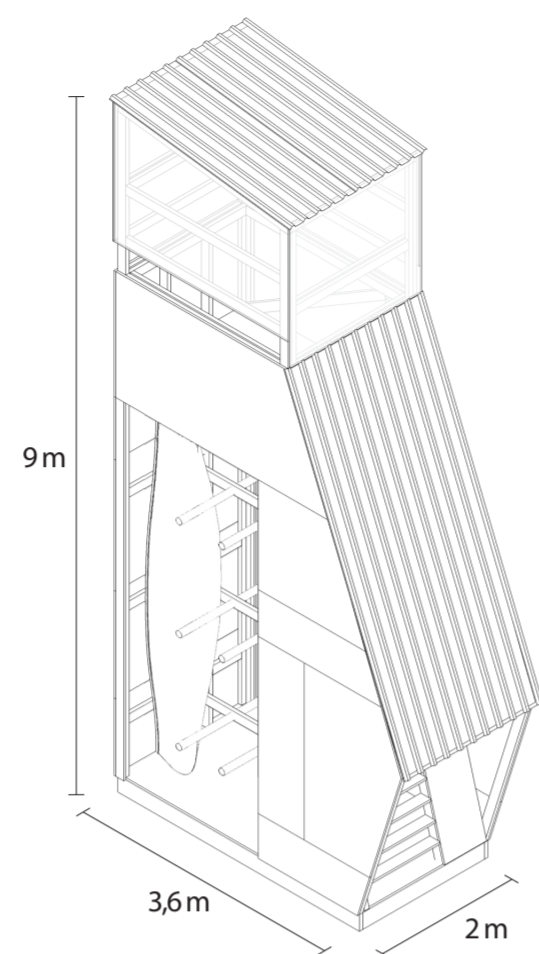


4 | plywood

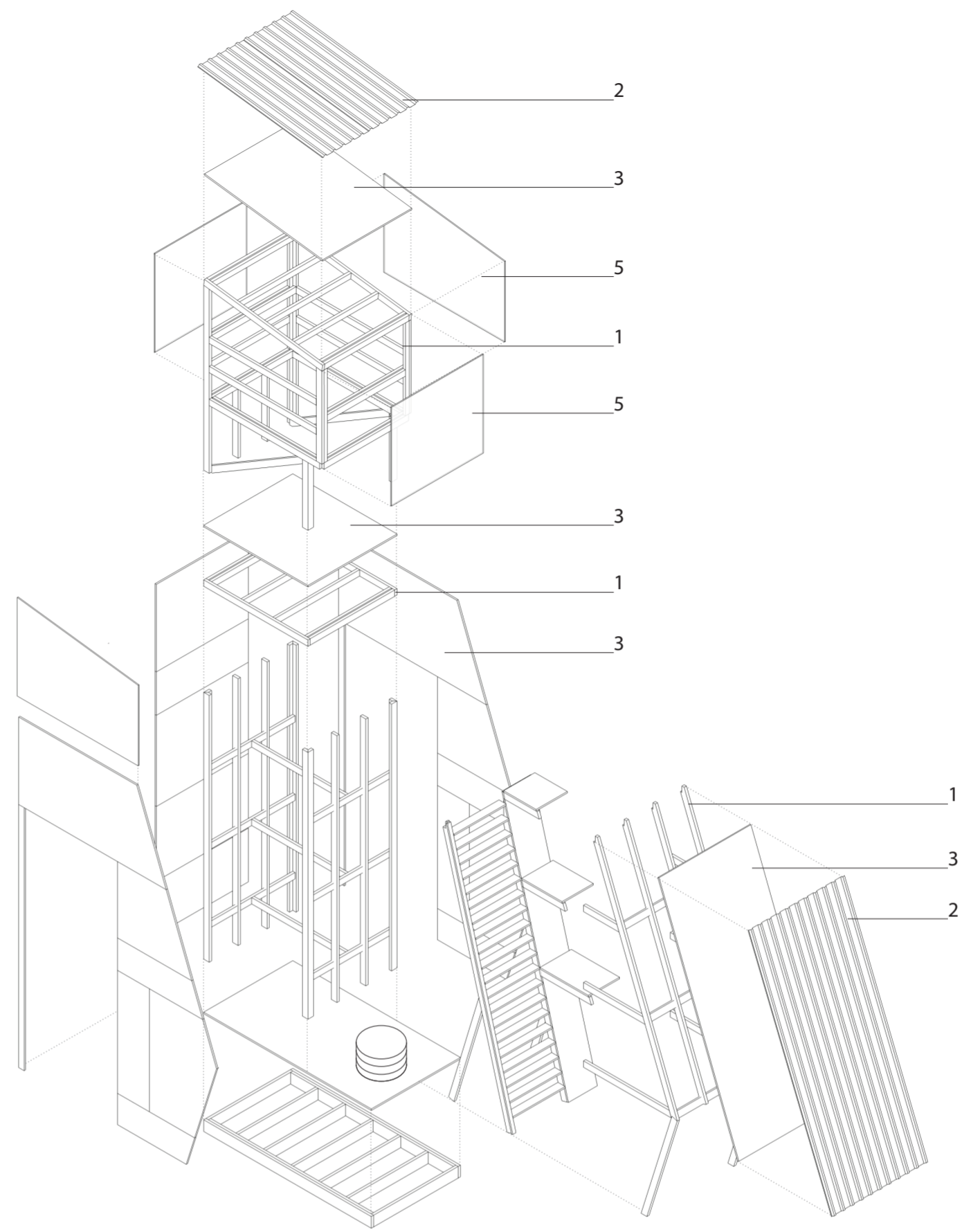


5 | plastic

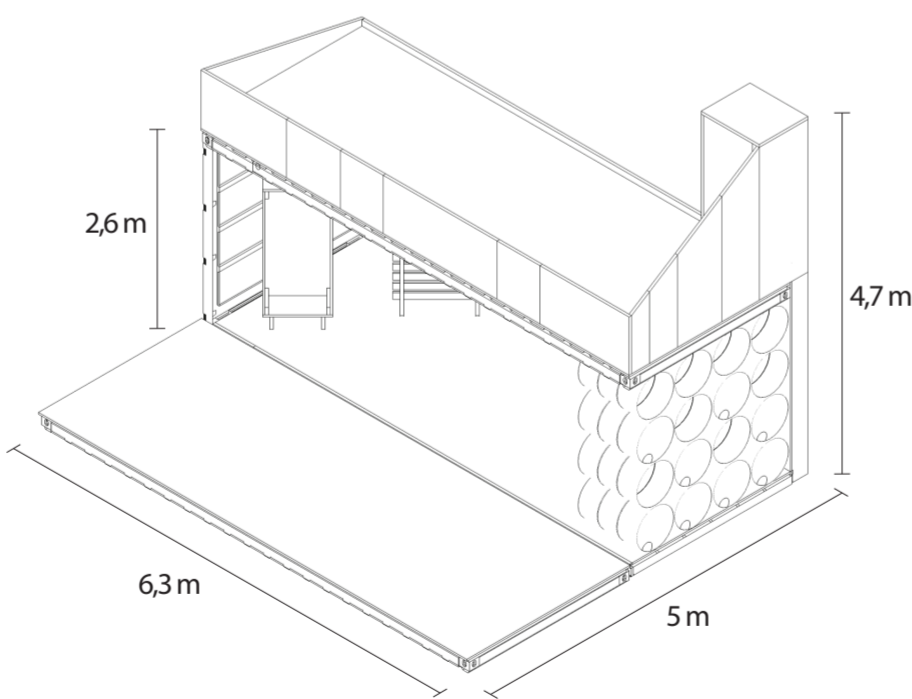
## THE LIGHTHOUSE | water



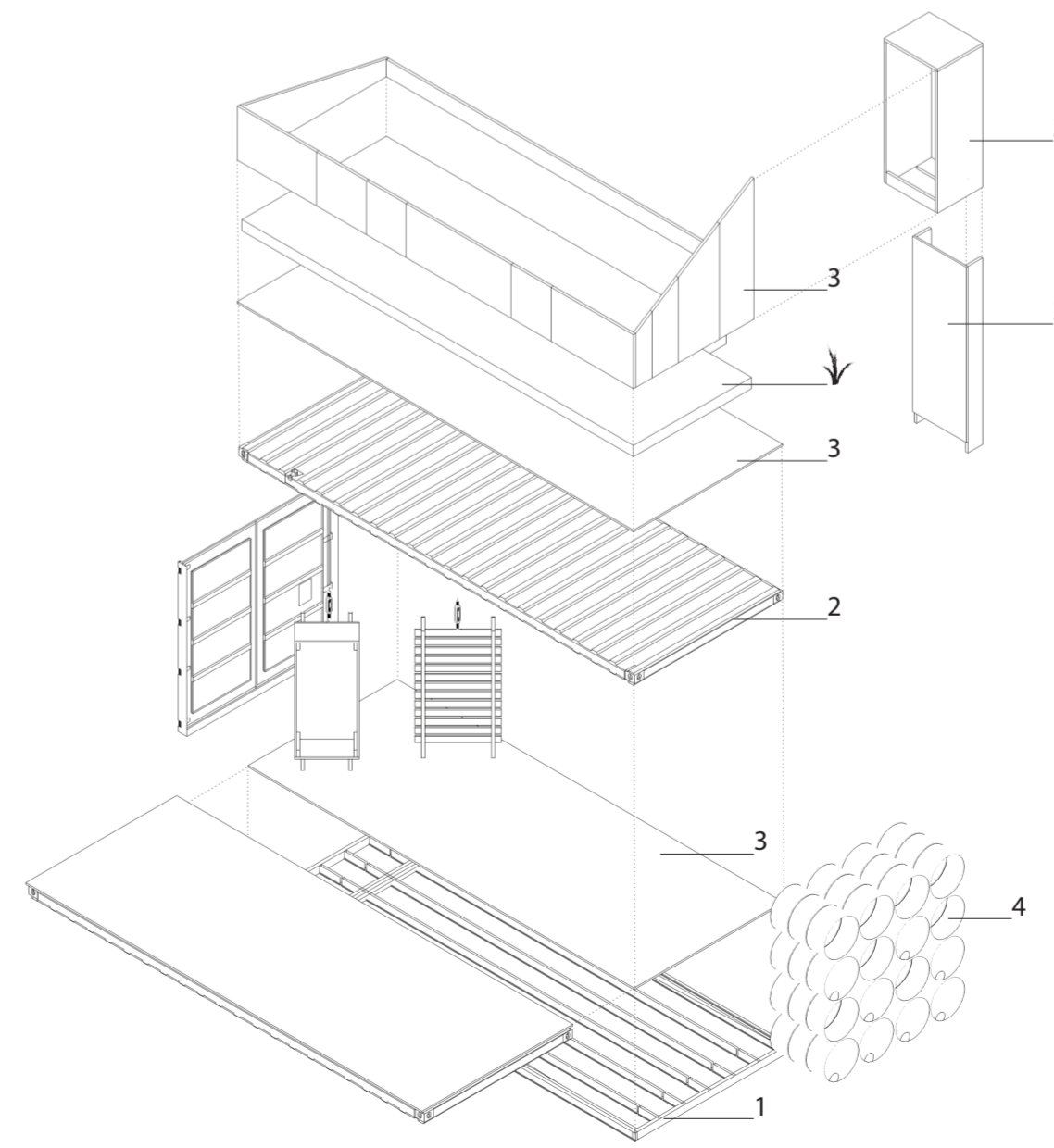
Lighthouses are located at points of water access. They provide space to store 6 canoes and include interior storage to accommodate fishing rods and gear. A notice board is located upon entering the structure, to allow for a travel communication log. At the top of the structure one is exposed to an elevated perspective which helps reframe the context of the village, in relation to its larger surrounds.



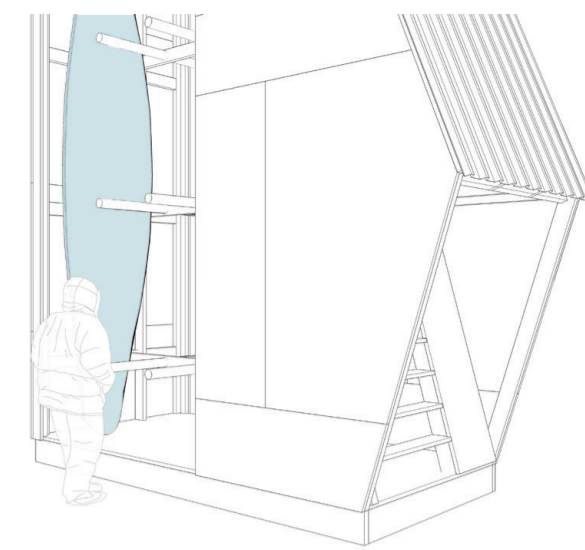
## THE SHELTER | land



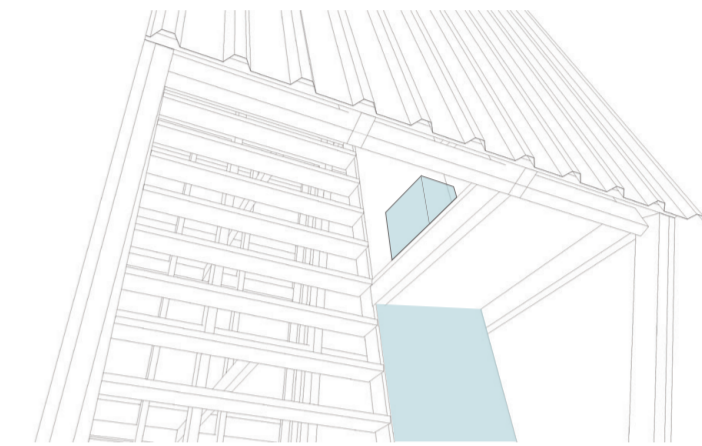
Qammutiq shelters are located in community "backyard space". A series of hooks allow one to hang sleds of varying sizes. These structures activate currently underutilized space by providing an extended platform from which one can work on (fix equipment/atvs) or socialize on. The sod roof is accessible and the space provides views out to landscape and the in-between space below.



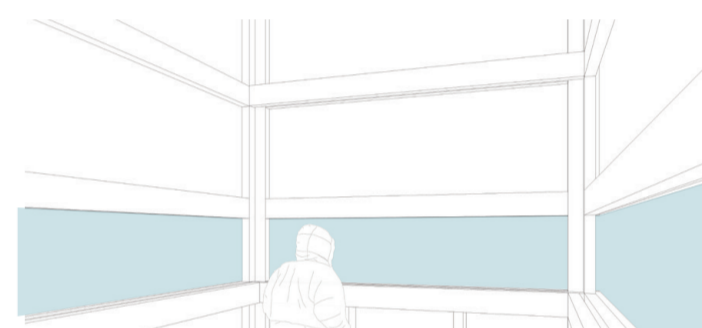
Canoes storage



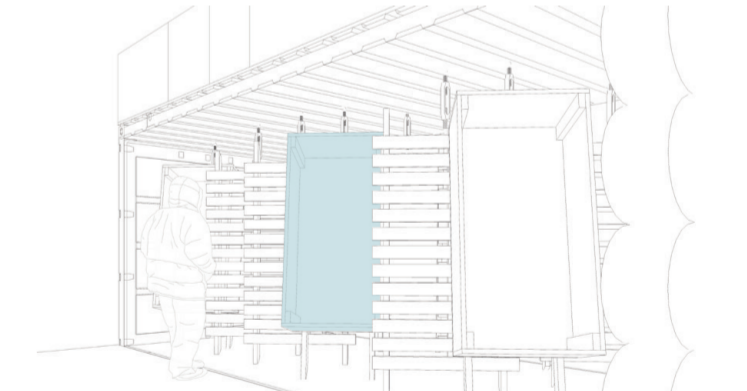
Fishing equipment & notice board



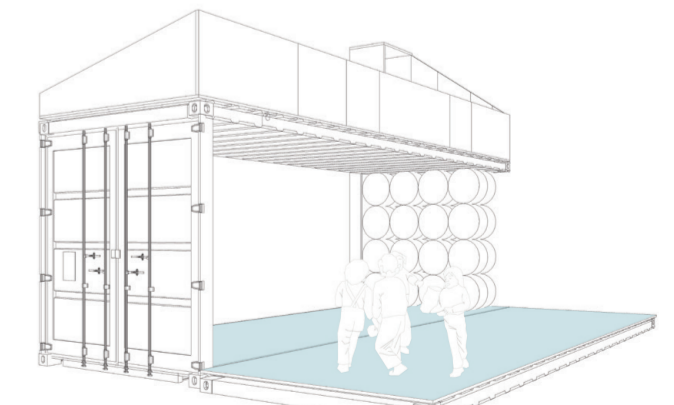
Observation point



Sleds storage



Exhibition stage



Observation point

